

LONO CENTER

95 Lono Avenue, Kahului, HI, 96732



PROPERTY

Two-story office building with ample parking located in central Kahului on the Island of Maui. The office building has a mix of professional and medical tenants including Hawaii Dental Group, Clinical Laboratories and the U.S. Coast Guard.

CENTER SIZE

13,700 SF

2021 DEMOGRAPHICS

	1-Mile	3-Mile	5-Mile
Estimated Population	10,795	50,976	57,845
2021 Projected Population	10,795	50,976	57,845
Total Households	3,115	14,854	17,013
Average Household Income	\$85,599	\$97,907	\$101,428
Daytime Population	14,389	54,789	60,693
Median Age	40	39	39
Bachelor Degree or Higher	16%	21%	23%



ALEXANDER & BALDWIN

822 Bishop Street, Honolulu, HI 96813 | www.alexanderbaldwin.com

Leasing: **Charles Buckingham (S)** (808) 870-1178 | charles.buckingham@colliers.com

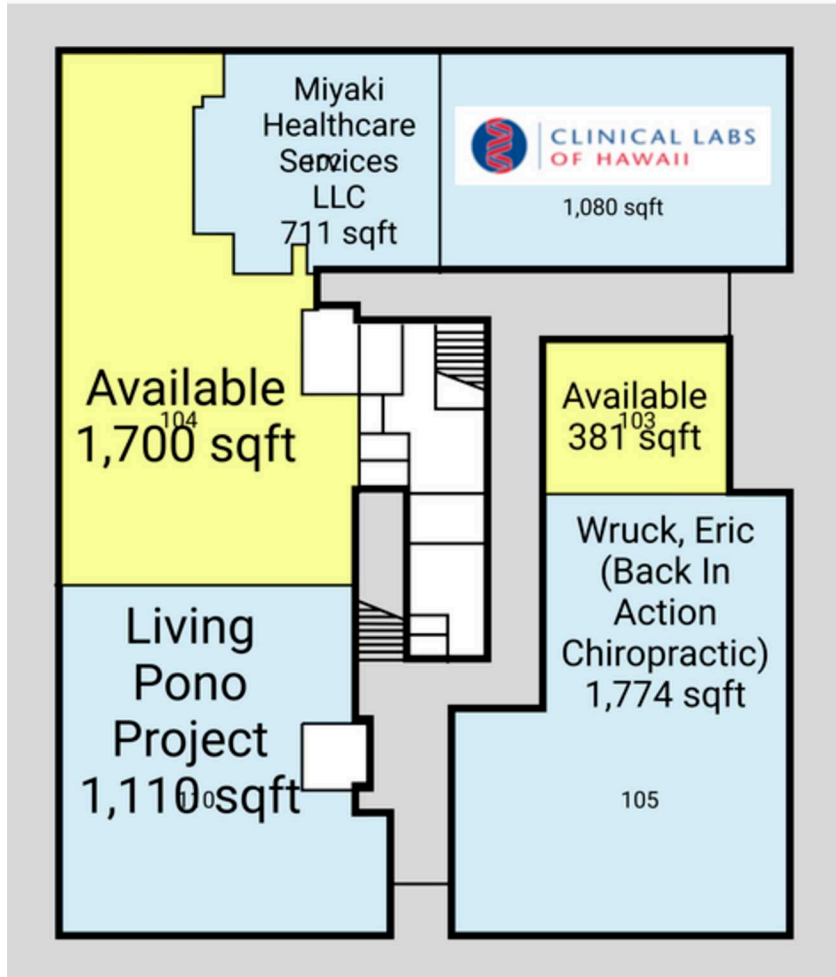
Leasing: **Cheyne K. Mench (S)** 808-525-8464 | cmench@abhi.com



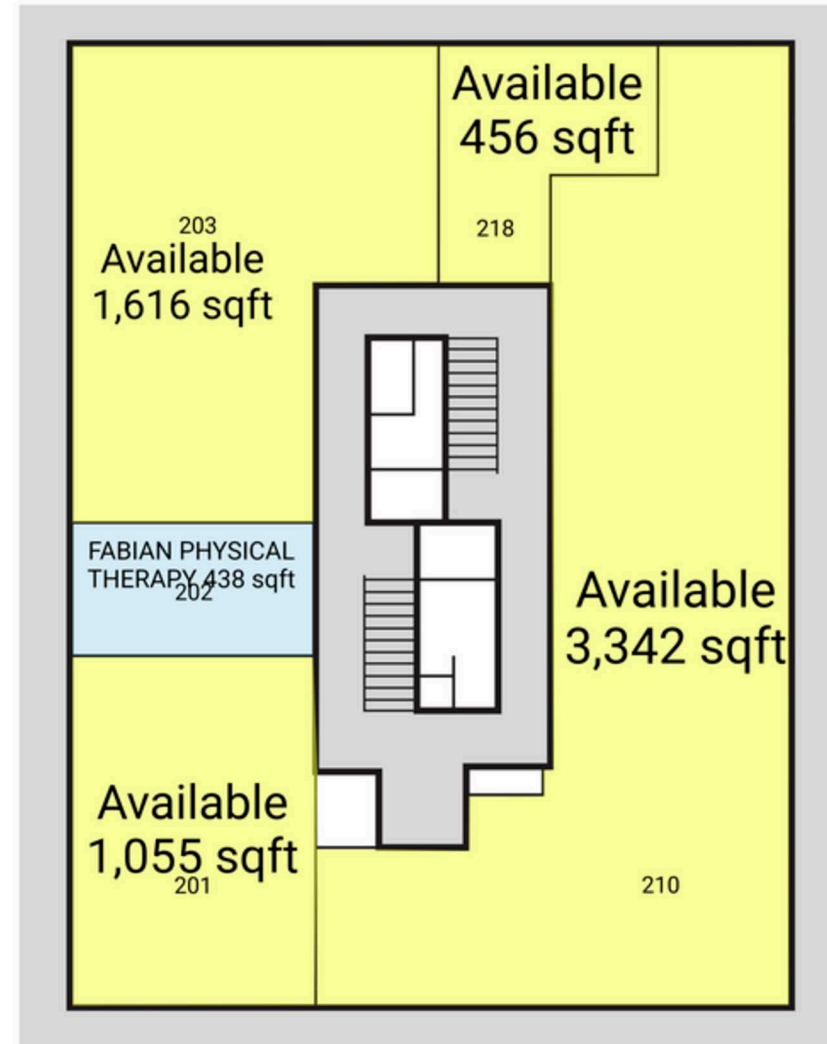
LONO CENTER

95 Lono Avenue, Kahului, HI, 96732

First Level



Second Level



ALEXANDER & BALDWIN

822 Bishop Street, Honolulu, HI 96813 | www.alexanderbaldwin.com

Leasing: **Charles Buckingham (S)** (808) 870-1178 | charles.buckingham@colliers.com

Leasing: **Cheyne K. Mench (S)** 808-525-8464 | cmench@abhi.com



LONO CENTER

95 Lono Avenue, Kahului, HI, 96732

AVAILABLE SPACES

SPACE	SF	SPACE	SF
103	381 SF	203	1,616 SF
104	1,700 SF	210	3,342 SF
201	1,055 SF	218	456 SF

All information is subject to change without notice. Dimensions, configurations, and frontages are approximate and any measurements are estimates. No promise is made that the spaces, common areas, amenities, landscaping, or features depicted are or will be built, or if built will be as shown. Landlord makes no representations about specific tenants or where they may operate. Unless Landlord signs a binding lease for a specific space, you do not have a right to lease any space. No content from these pages may be copied, republished, or distributed in any way without Landlord's written consent. Despite Landlord's efforts to provide accurate information, it is not possible to ensure it is always up to date, and Landlord assumes no responsibility for any actions taken in reliance on this information.



ALEXANDER & BALDWIN

822 Bishop Street, Honolulu, HI 96813 | www.alexanderbaldwin.com

Leasing: **Charles Buckingham (S)** (808) 870-1178 | charles.buckingham@colliers.com

Leasing: **Cheyne K. Mench (S)** 808-525-8464 | cmench@abhi.com

