

# OPULE STREET INDUSTRIAL

1043 + 1044 Opule Street, Kapolei, HI, 96707



## PROPERTY

Located in Kapolei Business Park, Opule Street Industrial has two adjacent industrial warehouse buildings. The warehouses have 32-foot heights and dock-high loading, as well as ESFR sprinkler systems and rooftop photovoltaic systems.

## CENTER SIZE

151,500 SF

## 2024 DEMOGRAPHICS

	1-Mile	3-Mile	5-Mile
Estimated Population	3	45,412	104,918
2021 Projected Population	3	45,412	104,918
Total Households	1	13,800	30,904
Average Household Income	\$95,251	\$150,080	\$149,119
Daytime Population	7,218	47,613	81,885



ALEXANDER & BALDWIN

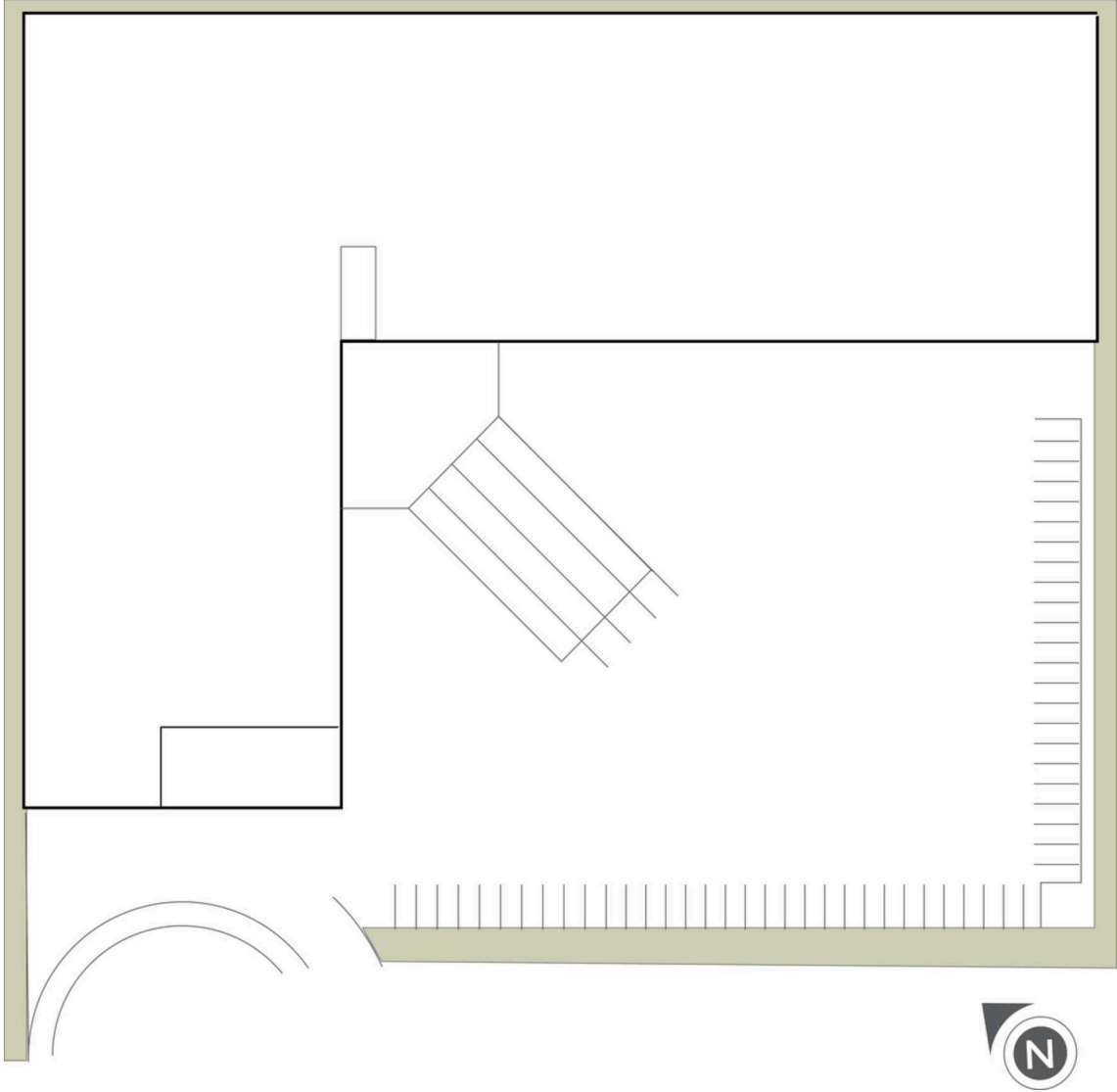
822 Bishop Street, Honolulu, HI 96813 | [www.alexanderbaldwin.com](http://www.alexanderbaldwin.com)

Leasing: **Cheyne K. Mench (S)** 808-525-8464 | [cmench@abhi.com](mailto:cmench@abhi.com)



# OPULE STREET INDUSTRIAL

1043 + 1044 Opule Street, Kapolei, HI, 96707



# OPULE STREET INDUSTRIAL

1043 + 1044 Opule Street, Kapolei, HI, 96707

## AVAILABLE SPACES

SPACE	SF
No Availabilities	

All information is subject to change without notice. Dimensions, configurations, and frontages are approximate and any measurements are estimates. No promise is made that the spaces, common areas, amenities, landscaping, or features depicted are or will be built, or if built will be as shown. Landlord makes no representations about specific tenants or where they may operate. Unless Landlord signs a binding lease for a specific space, you do not have a right to lease any space. No content from these pages may be copied, republished, or distributed in any way without Landlord's written consent. Despite Landlord's efforts to provide accurate information, it is not possible to ensure it is always up to date, and Landlord assumes no responsibility for any actions taken in reliance on this information.

